



## FBL5000 Series

**FBL5000** Single Lane Flap Barrier Turnstile

**FBL5011** Single Lane Flap Barrier Turnstile  
(w/ controller and RFID reader)

**FBL5022** Single Lane Flap Barrier Turnstile  
(w/ controller and fingerprint & RFID reader)

The ZKTeco FBL5000 single lane flap barrier turnstile is an elegant cost-effective entrance control system designed for high-traffic volume.

The FBL5000 is a single lane flap barrier turnstile series designed for smooth and silent operation and draws very little power. It's made of stainless steel which makes FBL5000 highly durable.

FBL5000 barriers are normally held in a locked position, thus denying access to the secured side. Upon FBL5000's reader (RFID and/or fingerprint) positively recognizing a user's valid access card or fingerprint, its barriers retract upward automatically, thus allowing users passage to the secured side.

During emergencies the barriers automatically retract upward, thereby avoid users being trapped. A battery for power outage safety can be installed for retracting the barrier automatically.

FBL5000 provides both security and convenient space, all in a very durable and elegant compact design.

### Features

#### Reliability

- SUS304 stainless steel casework ensure long-lasting durability.
- High quality electrical components.

#### Safety Features

- Barriers retract automatically during emergencies.
- Barriers retract automatically during power outage with battery installed.
- All smoothfinishing. No exposed screws.
- Ergonomic design makes card and fingerprint authentication fast & simple for users.

#### Built-in Reader Integration

- FBL5000 series is already integrated with our customers' preference for either card or fingerprint access control reader. This greatly reduces installation time & expense.
- FBL5000 series and associated access control readers are all factory-tested prior to shipping.
- ZKTeco provides true plug&play turnstiles with the lowest possible total cost of ownership in the industry.

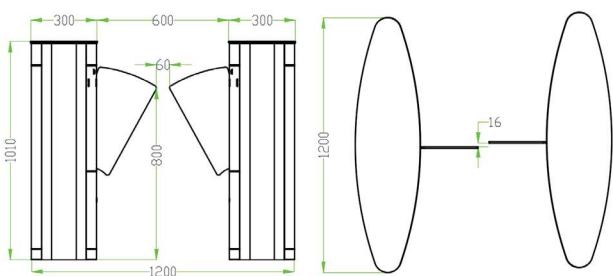
#### Simplification

- LCD on the flap barrier control board, easy operation.

# Specifications

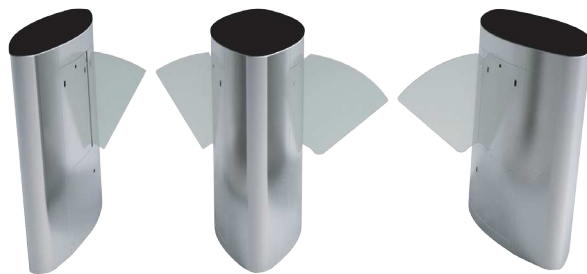
Power requirements		AC 120 ~ 100V/240 ~ 200V, 60/50Hz
Working temperature		28-°C~60°C
Working humidity		%5~%80
Working environment		Indoor/outdoor (if sheltered)
Speed of throughput	RFID	Maximum 42/ minute
	Fingerprint	Maximum 35/ minute
	Face	Maximum 11/ minute
	Vein	Maximum 23/ minute
Lane width(mm)		600
Footprint(mm*mm)		1200*1200
Dimensions(mm)		L=1200,W=300,H=1010
Dimension with packing(mm)		L=1400,W=840,H=1100
Net weight(kg)		126
Weight with packing(kg)		196
LED indicator		Y
Cabinet material		SUS304 Stainless Steel
Lid material		SUS304 Stainless Steel
Barrier material		Acrylic
Barrier movement		Retracting
Emergency mode		Y
Security level		Medium
MCBF		2 million

## Dimensions (mm)



## Customization

- 900MM Wide Lane Available



More details

ZKTECO CO.,LTD.  
[www.zkteco.com](http://www.zkteco.com)  
 E-mail: [sales@zkteco.com](mailto:sales@zkteco.com)

© Copyright 2017. ZKTECO CO., LTD. ZKTeco Logo is a registered trademark of ZKTECO CO., LTD. or a related company. All other products and company names mentioned are used for identification purposes only and may be the trademarks of their respective owners. All specifications are subject to change without notice. All rights reserved.